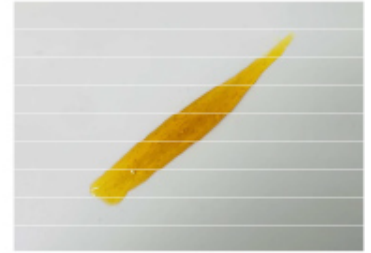


CERTIFICATE OF ANALYSIS No.: 2025-17529

CLIENT

MM Tech & Trading AB, Björlundavägen 7A
S-28133 Hässleholm, Sweden



SAMPLE *

Sample condition: SUITABLE
Sample ID: 2549016
Sample type: Resinous material
Batch No.: * EMD5302537A

Work order: 2025-113095
Analysis ID: 2025_366
Method ID: PHL_RPC_16C
Method SOP: MET-LAB-001-08

Sample received: 02/12/2025
Start of analysis: 02/12/2025
End of analysis: 03/12/2025
Analyst: Valentina Malin

* Information provided by the client.

CANNABINOID PROFILE	Concentration [% w/w]	Expanded uncertainty [% w/w]	Graphic presentation of relative cannabinoid concentration
CBDV - Cannabidivarin	0.732	0.088	
CBDA - Cannabidiolic acid	< LOQ	n/a	
CBGA - Cannabigerolic acid	< LOQ	n/a	
CBG - Cannabigerol	8.27	0.58	
CBD - Cannabidiol	54.7	2.7	
THCV - Tetrahydrocannabivarin	< LOQ	n/a	
CBN - Cannabinol	2.67	0.13	
Δ⁹-THC - Δ-9-Tetrahydrocannabinol	< LOQ	n/a	
Δ⁸-THC - Δ-8-Tetrahydrocannabinol	< LOQ	n/a	
CBL - Cannabicyclol	0.395	0.067	
CBC - Cannabichromene	2.47	0.12	
Δ⁹-THCA - Δ-9-Tetrahydrocannabinolic acid	< LOQ	n/a	
CBV - Cannabivarin	0.059	0.013	
CBCA - Cannabichromenic acid	< LOQ	n/a	
CBT - Cannabicitran	3.72	0.19	
CBE - Cannabielsoin	4.83	0.48	

Units and abbreviations: % w/w = weight percent, < LOQ = below the limit of quantitation (0.03 % w/w), ND = not detected, n/a = not available.

The results given herein apply only to the sample as received and tested. **Expanded Uncertainty** was calculated using coverage factor $k = 2$, corresponding to a double standard uncertainty and characterizes the interval value in which it is possible to expect the real value with a probability of 95%. This is stated according to the ISO/IEC Guide 98-3.

Total or partial reproduction of this document is not allowed without the permit from PharmaHemp d.o.o. The document does not substitute any other legal document.

Date issued:

03/12/2025

Approved by:

mag. Valentina Malin
Analytical Laboratory Manager

Authorized by:

dr. Boštjan Jančar
Chief Technology Officer

End of Certificate